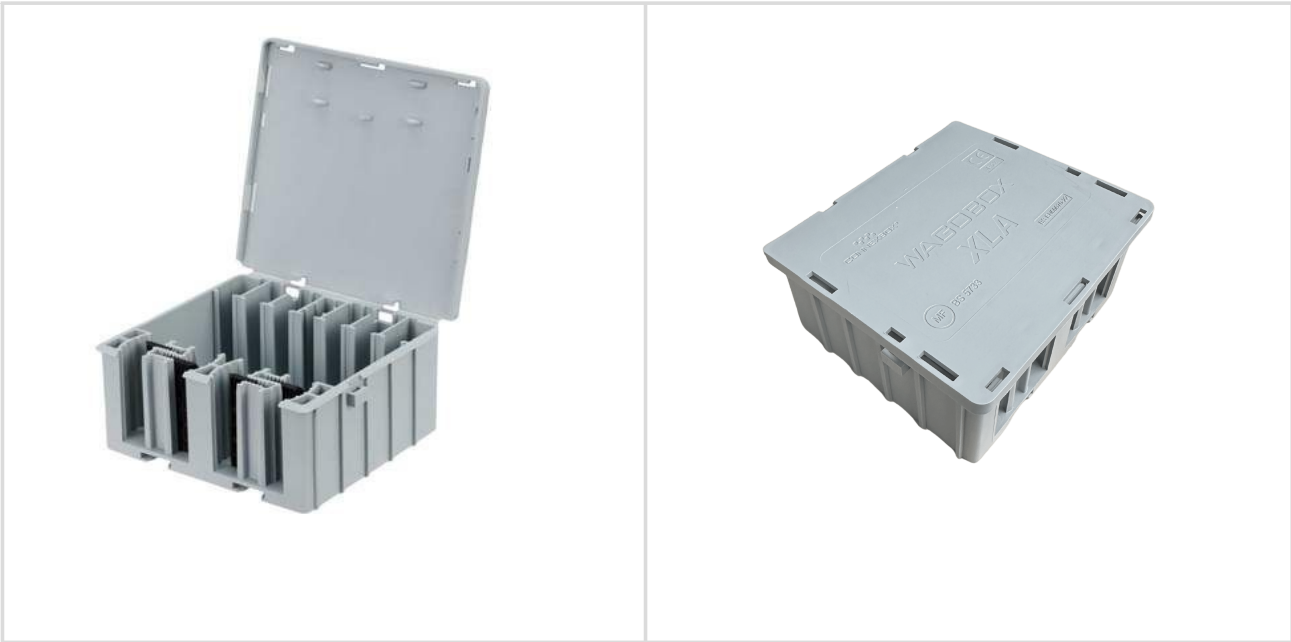


Data sheet | Part number: WXA-001-G

WAGOBX XLA; Grey; Multi-Purpose Enclosure; Junction Box; for WAGO 221-6xx lever connectors (use with 6mm² adapter) and 222 and 773 terminal blocks; maximum 6 mm² conductors; for multicore cables; configurable to BS5733 - Maintenance Free (MF); Manufactured in the UK



Features & Benefits

- Simple, quick and safe to use
- Adjustable cable restraint
- Screw-free design
- Complies with BS EN 60670-22, BS 7671 and configurable to BS 5733-MF

Electrical data	
Ratings per IEC/EN	
Ratings: Rated current up to 32 A; Nominal voltage 450 V; Rated impulse voltage 4 kV	

Physical data	
Width	126 mm / 4.961 ins
Height	55 mm / 2.165 ins
Depth	115 mm / 4.528 ins
Weight	7.8 g

Material data	
Note (material data)	Visit www.connexbox.com for material specifications information
Material	Polypropylene, Fire Retardant (FR), Colour Master Batch
Colour	Grey
Fire load	0 MJ
Flammability Rating	BS EN 60670-22 Glow-wire, Ignition Resistant UL94 V2

Commercial data	
Country of Origin	United Kingdom
ETIM 8.0	EC001170
PU (SPU)	1 Piece
GTIN	986239960000

Mechanical data	
Protection type	IP2X
Mounting type	For surface mounting in all types of installation except into concrete
Mounting accessories	Wagobox Mounting Button (WMB-001-G)
Additional accessories	Replacement Grippers (WBX-GRP-B)
Cable sizes	Up to 12 cables with overall diameter 3.0 mm² to 15 mm²
Conductor sizes	0.08 mm² to 6.0 mm²
Recommended connectors	Wago 221-6xx series lever connectors (must be used with 6 mm² adapter) and Wago 222 and 773 series pushwire connectors
Max. supported individual conductor connections	36, based on installation of 12 x 3-core cables of 1.0 mm² 12 x 6.0 mm², based on installation of 6 x 3-core cables

Environmental Product Compliance	
RoHS Compliance Status	Compliant, no exemptions (Information on Compliance document available to download at: www.connexbox.com)

Approvals and Ceertificates		
Approval	Certificate	Standard
RoHS, CE	Electrical Safety Test	BS EN60670-22:2006 (Part 22: Particular requirements for connecting boxes and enclosures) in conjunction with BS EN60670-1:2005 +A1:2013 (Boxes for electrical accessories for household and similar fixed electrical installations - Part 1: General requirements
	BS EN 60529	Degrees of protection provided by enclosures (IP 2X)

This document is subject to change. Please also observe the further product/materials documentation available at www.connexbox.com

